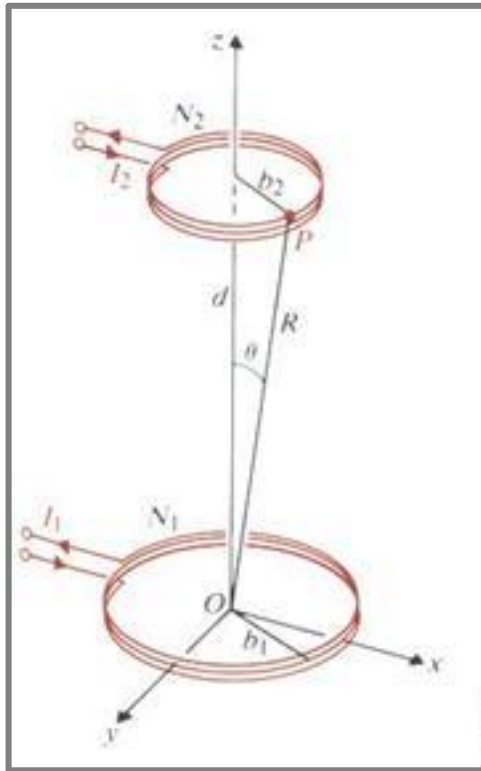
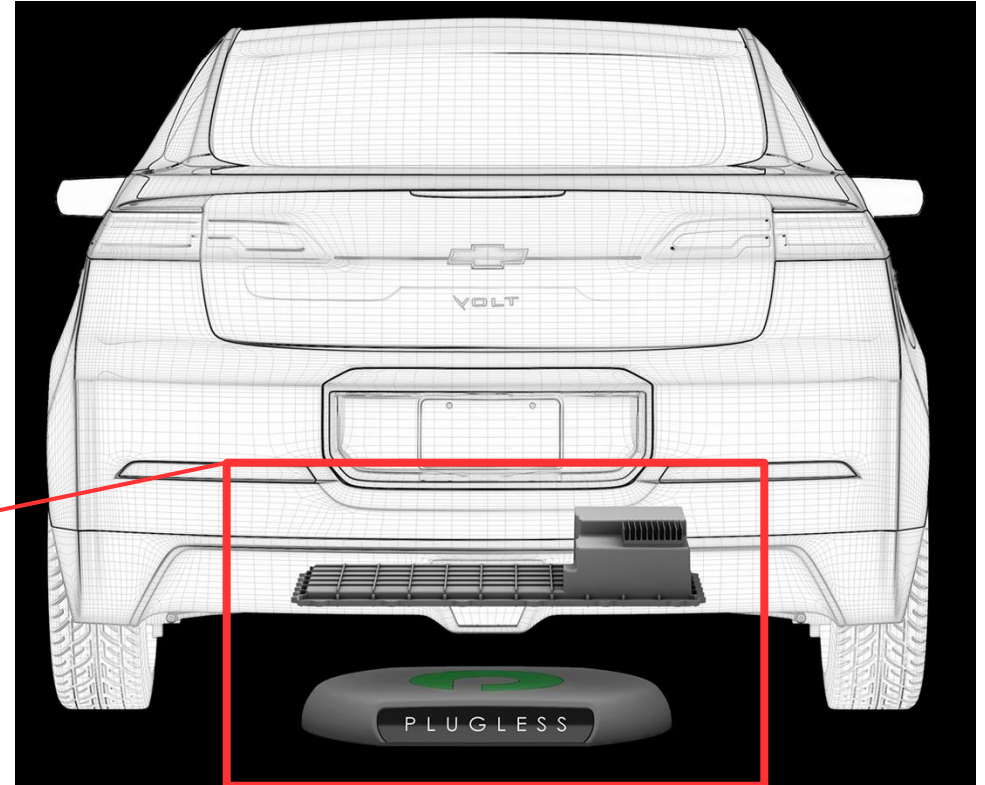
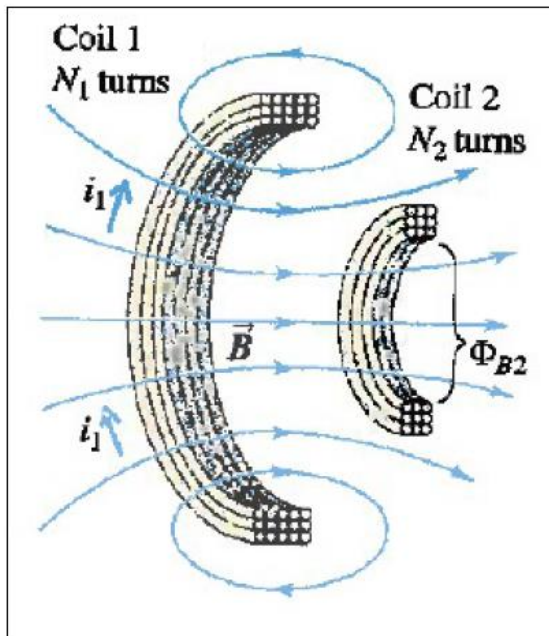


# Plugless Power for Electric Vehicles



# How these two coils work?



Mutual inductance

$$\epsilon_2 = -M \frac{d I_1}{dt}$$

If the input current is an AC current as:

$$I_1(t) = I_0 \sin(\omega t)$$

$$\epsilon_2(t) = -M \omega I_0 \cos(\omega t)$$



This is used to charge the battery in the EV

# Other Possibilities



Electric toothbrush

Cell Phone



And.... you name it...